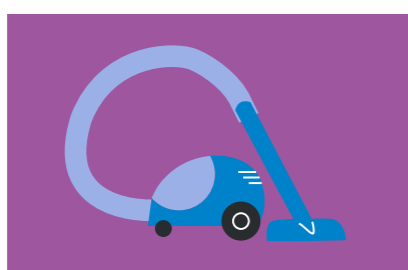
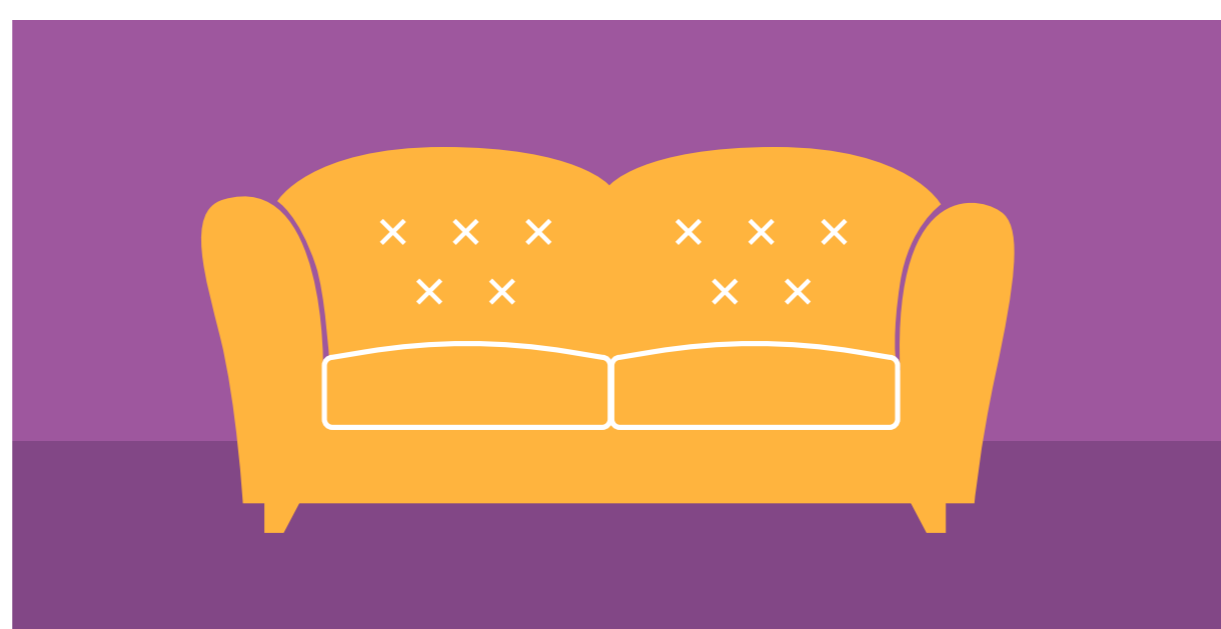
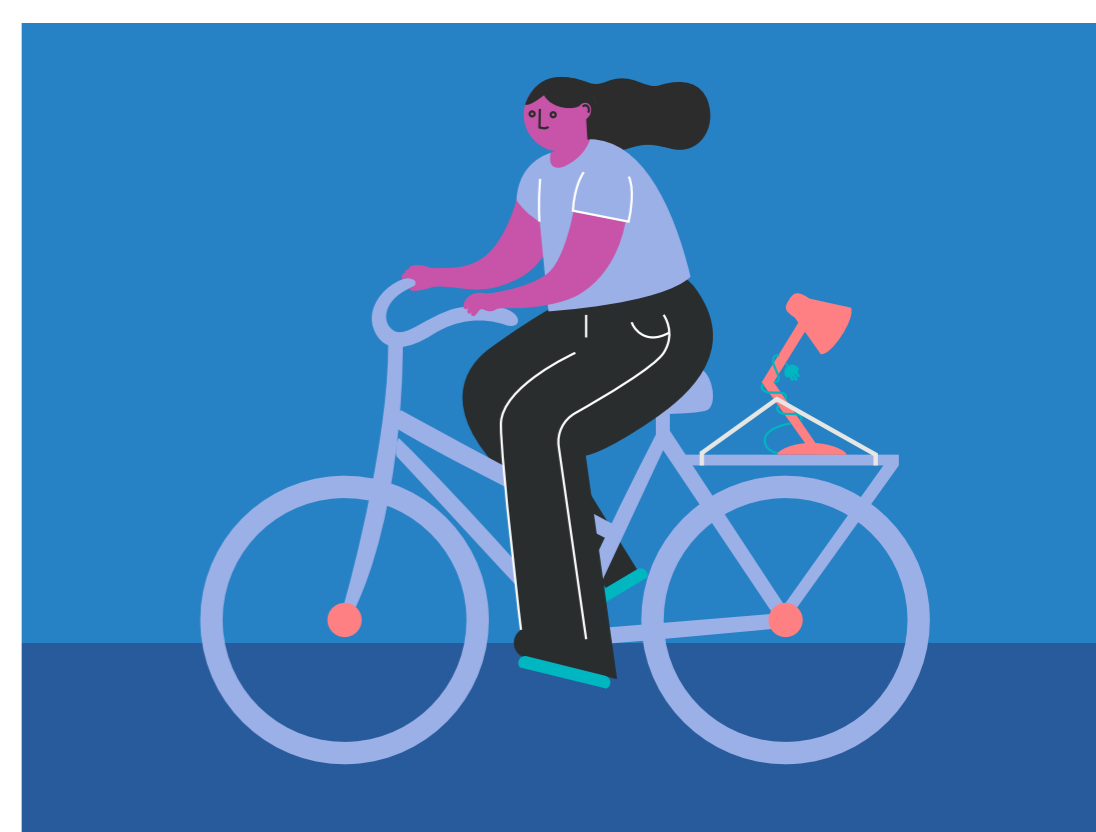
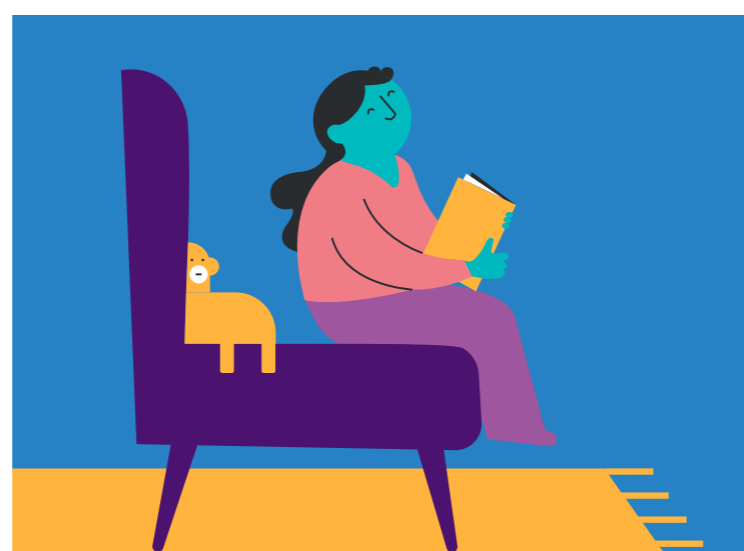
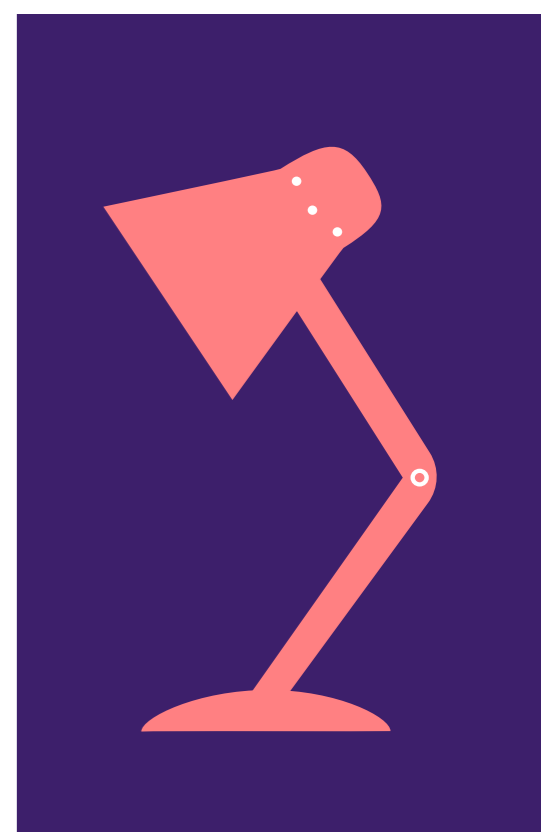
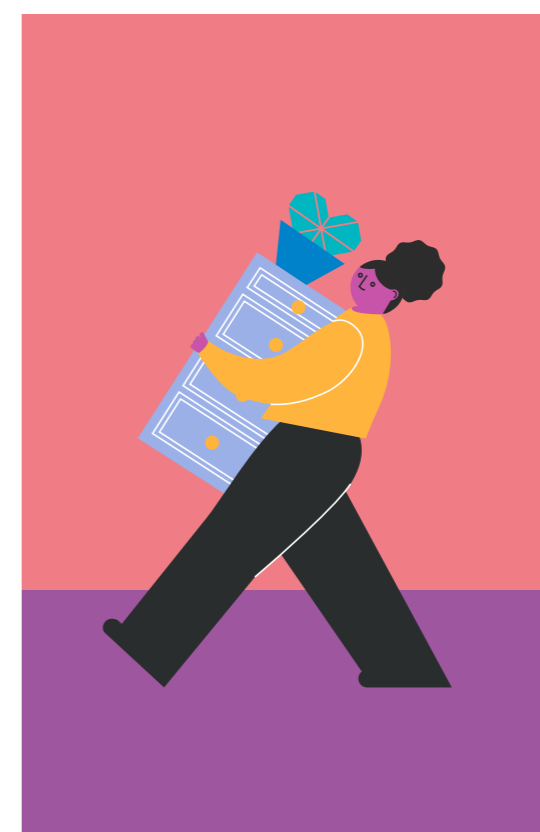


reuse  
NETWORK



# Social Impact Report 2025



Published Jan 2026  
reuse-network.org.uk

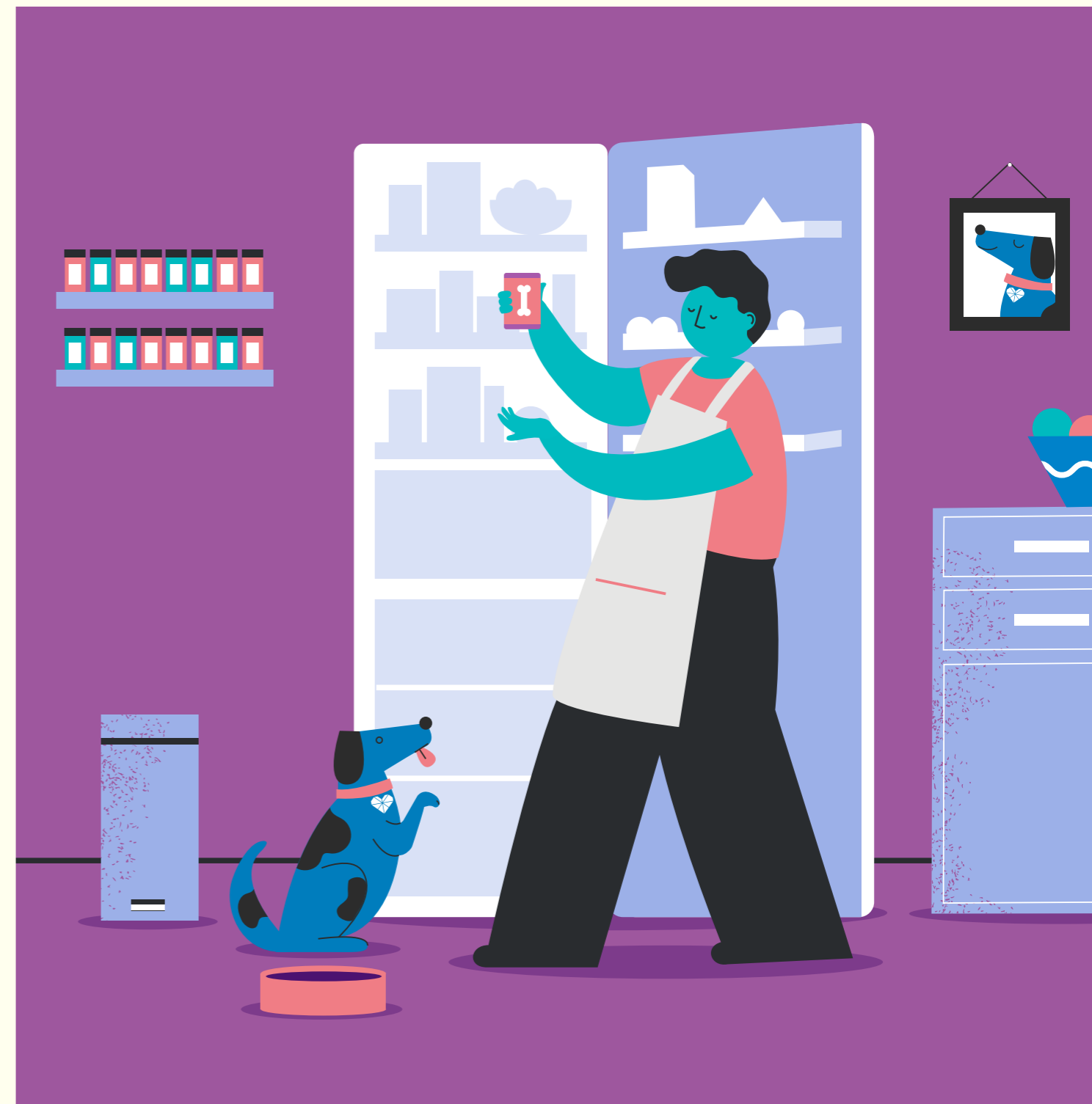
# Contents

---

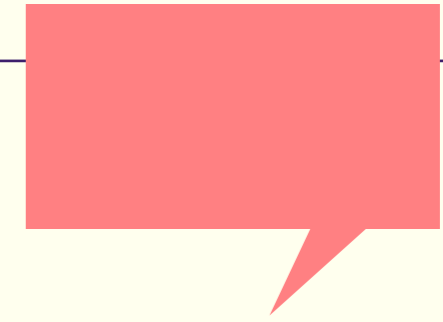
---

A message from the CEO	3
About Reuse Network	4
Our 2025 highlights	5
Reuse sector stats	6
Who makes up the sector	7
Case study: Project Colt	8
Who our members are	9
Our members' reuse activities	10
Our members' reuse activities: continued	11
Our commercial partners' impact	12
Case study: The Furniture Revival	13

---



# A message from the CEO



The Reuse Network Social Impact Report 2025 highlights the tangible difference our members and partners make every day, showcasing how collaboration drives real, lasting change across the UK. This year's report demonstrates how our members and partners are not only creating meaningful impact in communities but also helping us move closer to our mission of building a society where everyone can create a sustainable home.



The message of reuse for social and environmental benefit is being heard. We speak loudly and clearly on behalf of our members so that we can be a driving force in our sector nationally, influencing policymakers, ensuring the growth of the social economy reuse sector and offering a better way of life for households in need. We are helping our members connect with and support the most isolated and vulnerable members of their communities, helping them make a house a home, and to combat climate change through more sustainable resource use. This means providing them with representation, supply of stock, and the specialist advice and information they need to tackle poverty and inequality and reduce climate change.

The cost-of-living crisis is impacting the sector, and although there is an increase in demand for stock, the supply of such goods has dwindled by 40% over recent years. The sector is struggling to meet societal demand, but there is great opportunity in the circular economy resource initiatives that are emerging. Despite the constraints of the current socio-economic landscape, the reuse sector continues to create positive impact within our local communities. This report shows some of the key impacts of reuse – but this is just a few of the many benefits the sector produces each year.

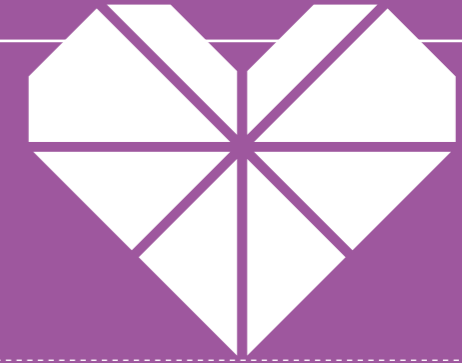
Reuse charities support the most vulnerable members of our society, but their contributions to social welfare are often overlooked in policy discussions. Despite the sector's clear alignment with government goals for economic growth, the circular economy and social justice, the lack of visibility of these broader impacts hinders the sector's ability to secure consistent government support and funding.

Our intention is to demonstrate to the Government and other stakeholders that supporting reuse and the circular economy can be achieved in two key ways: first, by reviewing and reducing negative policy impacts and regulatory barriers; and second, by strengthening the existing reuse sector – recognising its wider social and economic value. Together, these actions can help move activity up the waste hierarchy, optimise resource use, and deliver early wins in circular economy progress and green economic growth.

By championing reuse and working together, we are building a society where everyone can create a sustainable home – turning social, environmental, and economic challenges into lasting opportunity.

**Craig Anderson**  
CEO, Reuse Network

# About Reuse Network



**At the heart of our mission is the drive to create a sustainable, supportive network across the UK, where everyone can build a sustainable home.**

We believe in the power of reuse — especially in today's world, where resources are limited and demand for household and electrical items is on the rise. Reducing waste through reuse not only prevents valuable resources from ending up in landfill but also provides families and individuals with limited incomes with good quality household and electrical items at affordable prices.

But it doesn't stop there — the activity of reuse creates employment, training and volunteering opportunities especially for those most marginalised in our society.



## How we support our members



We work closely with our members to ensure they have the resources, connections, and opportunities to thrive. Our support includes:

- **Access to funding and sector support:** Helping members secure funding and engage with sector-specific assistance.
- **Raising profile and building partnerships:** Promoting members both locally and nationally, while creating opportunities for meaningful collaborations.
- **Information, advice and guidance:** Offering expert advice on standards, best practice, and regulatory compliance, ensuring members stay informed and aligned with industry standards.
- **Representation:** Acting as a voice for our members at a local and national level, engaging with key stakeholders.

## Key services include:



- **Regional networking events:** Organising networking opportunities across the UK to facilitate collaboration and growth.
- **National service finder:** Featuring a directory of reuse charities and social enterprises to streamline public donations and enquiries.
- **Exclusive member space:** Providing a platform for members to access resources, start discussions, and share knowledge.
- **Quality management audits:** Offering members the chance to undergo quality audits to ensure high standards.
- **Buying opportunities:** Managing exclusive purchasing options from selected service providers and product suppliers.
- **Product Weight Protocol:** Offering a licensed list of over 200 furniture and electrical items to support accurate weight reporting.
- **National partnerships:** Managing strategic partnerships between major retailers, reuse charities, and social enterprises to foster growth and collaboration.

# Our 2025 highlights



**We welcomed Lynsey Ford as our new charity ambassador and embarked on a partnership to raise awareness around the importance of reuse.**

Lynsey is an architect and interior designer who won BBC's Interior Design Masters in 2021. Known for her practical, thoughtful approach to interiors she often incorporates second-hand and upcycled items into her work. Since winning Interior Design Masters, Lynsey has continued to champion sustainable design choices and support accessible, affordable ways to create beautiful spaces.



## Roadshows return

The Reuse Network Regional Roadshows returned this year with an engaging programme that encouraged connection, collaboration and fresh insight across the sector. Members heard from expert speakers and built practical partnerships to drive the reuse agenda forward.



Viridor renewed its support for Reuse Network through a £35,000 grant as part of its We Share Community Fund, marking the fourth consecutive year of partnership. This investment will help expand digital support for members, strengthen sector-wide campaigning, and boost research to champion reuse across the UK's circular economy.

The ongoing collaboration continues to amplify the impact of a sector that diverts millions of items from landfill, supports low-income households, and saves significant carbon emissions each year.



## Reuse awards

The Reuse Network Awards also made their return, celebrating standout achievements across Scotland, Wales, the North of England and the South of England. At each Roadshow, one organisation was named Reuse Organisation of the Year for exceptional social and environmental impact in 2024/25, shining a spotlight on the dedication and impact of teams across the sector.

# The Reuse Sector



## In 2025

the reuse sector as a whole reused 2.29 million furniture and electrical items.

**83,262**

tonnes of CO<sup>2</sup> emissions saved



**£288.88m**

household savings



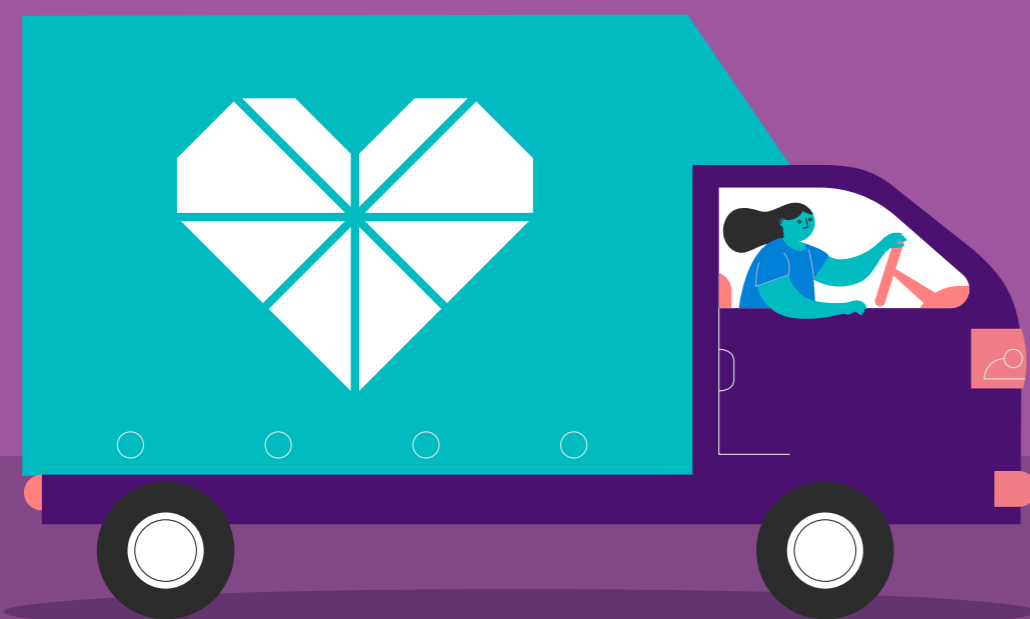
**77,470**

tonnes of waste diverted from landfill

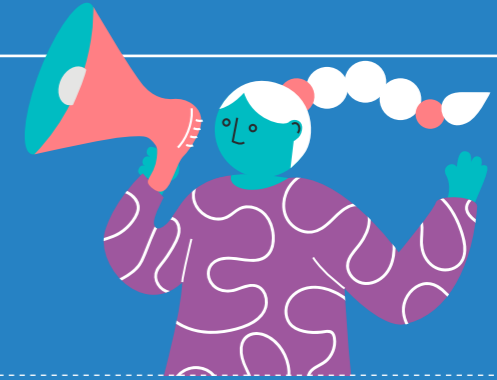


**1.35m**

households helped



# Who makes up the sector



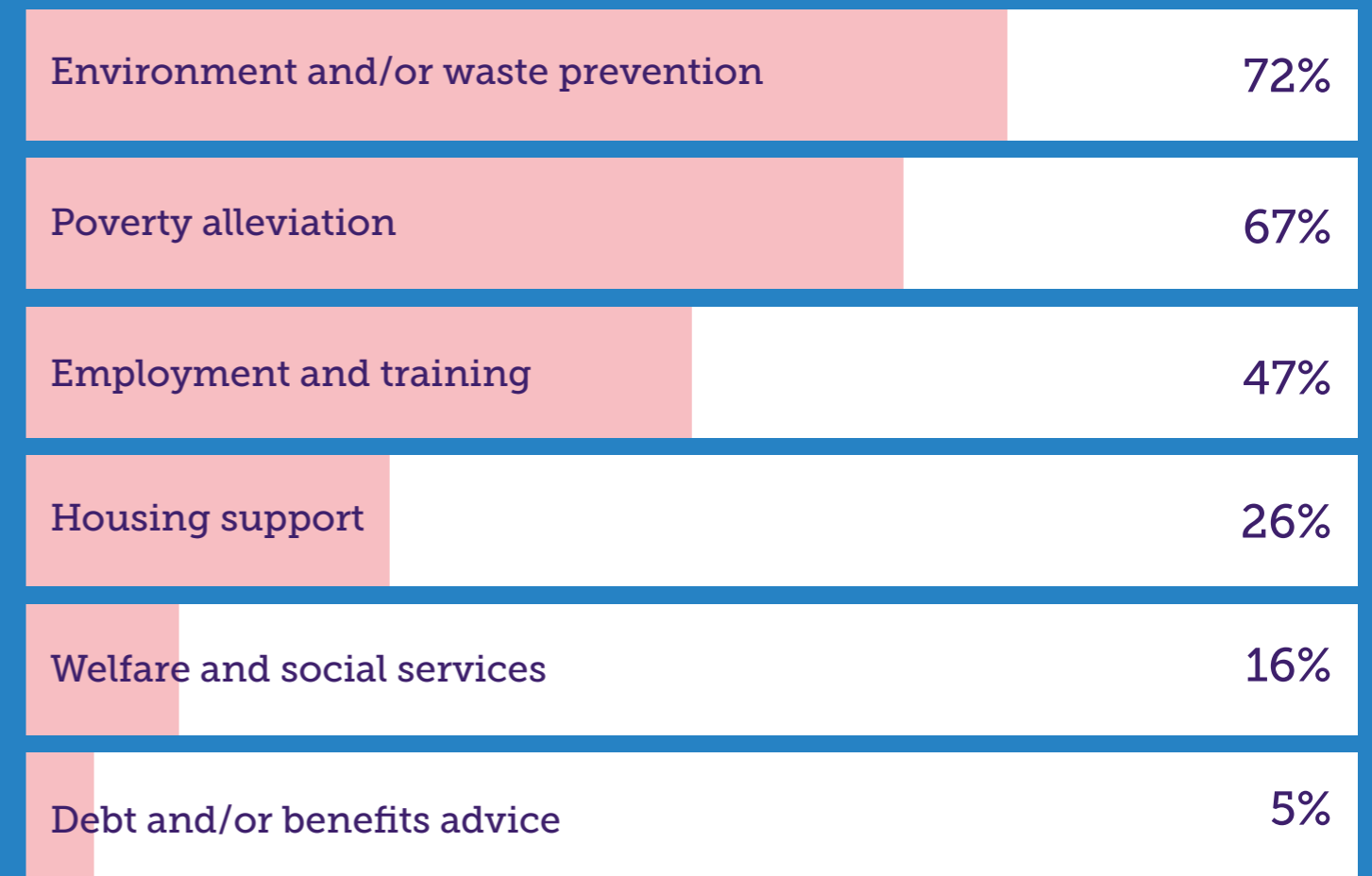
Our members are helping to create stronger, more resilient communities, while also playing a vital role in reducing environmental impact and contributing to a sustainable future.

They are improving the lives of low-income households by offering access to fairly-priced goods. They tackle social exclusion through training, volunteering, and employment opportunities. They are fighting climate change by reducing carbon emissions and diverting items from landfill.

In short, they are at the forefront of tackling some of the most pressing social and environmental issues today.



## How our members are making a difference:



## CASE STUDY

# Project Colt

**Founded in 2003, Elland-based Project Colt provides support and recovery services for individuals overcoming addiction. As part of the charity's work helping local people rebuild their lives, Project Colt established Colt Enterprise in 2005 to generate vital income for its recovery programmes.**

Today, Colt Enterprise offers an affordable range of pre-loved furniture, household goods, and artisan-made products, while also providing a safe, structured environment for individuals in the third phase of their recovery journey as well as people facing long-term unemployment.

As part of this year's Buy Nothing New Day campaign, Reuse Network partnered with Project Colt and our charity ambassador, Lynsey Ford, to launch a pre-loved pop-up shop within the Project Colt premises in Elland. Taking a previously unused space at the charity's site, Project Colt and Lynsey worked to transform the space into a beautiful pop-up shop using second hand materials to do so.

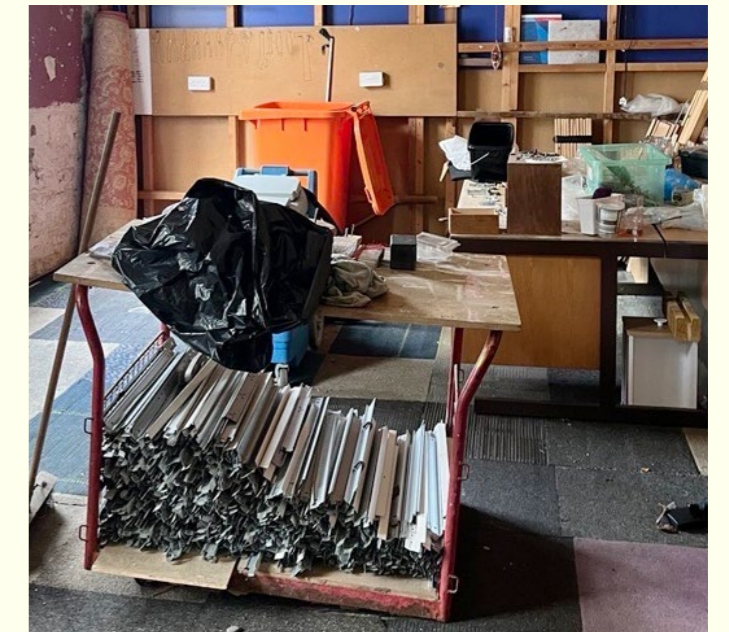
Lynsey, winner of BBC's Interior Design Masters and a long-time supporter of Project Colt, curated a collection of second-hand furniture and homeware to showcase reuse as a practical, affordable, and climate-friendly alternative to Black Friday. Alongside this, daily upcycling demonstrations, led by Lynsey,

encouraged visitors to see the potential in reused items and showed how simple creative steps can keep furniture in use for longer.

The event reinforced the environmental and social value of reuse but also delivered meaningful impact for Project Colt. The pop-up shop generated footfall to the charity's retail space and crucially, all proceeds from the pop-up were reinvested directly into Project Colt's recovery work.

"We were delighted to participate in this year's Buy Nothing New Day and help champion the positive impact of reuse. Pre-loved furniture offers exceptional beauty, creativity and value, and it was a privilege to collaborate with The Reuse Network and Lynsey Ford to host this special pop-up event. We hope we were able to demonstrate just how transformative and accessible sustainable design can be."

**Russell Davis** Director, Project Colt

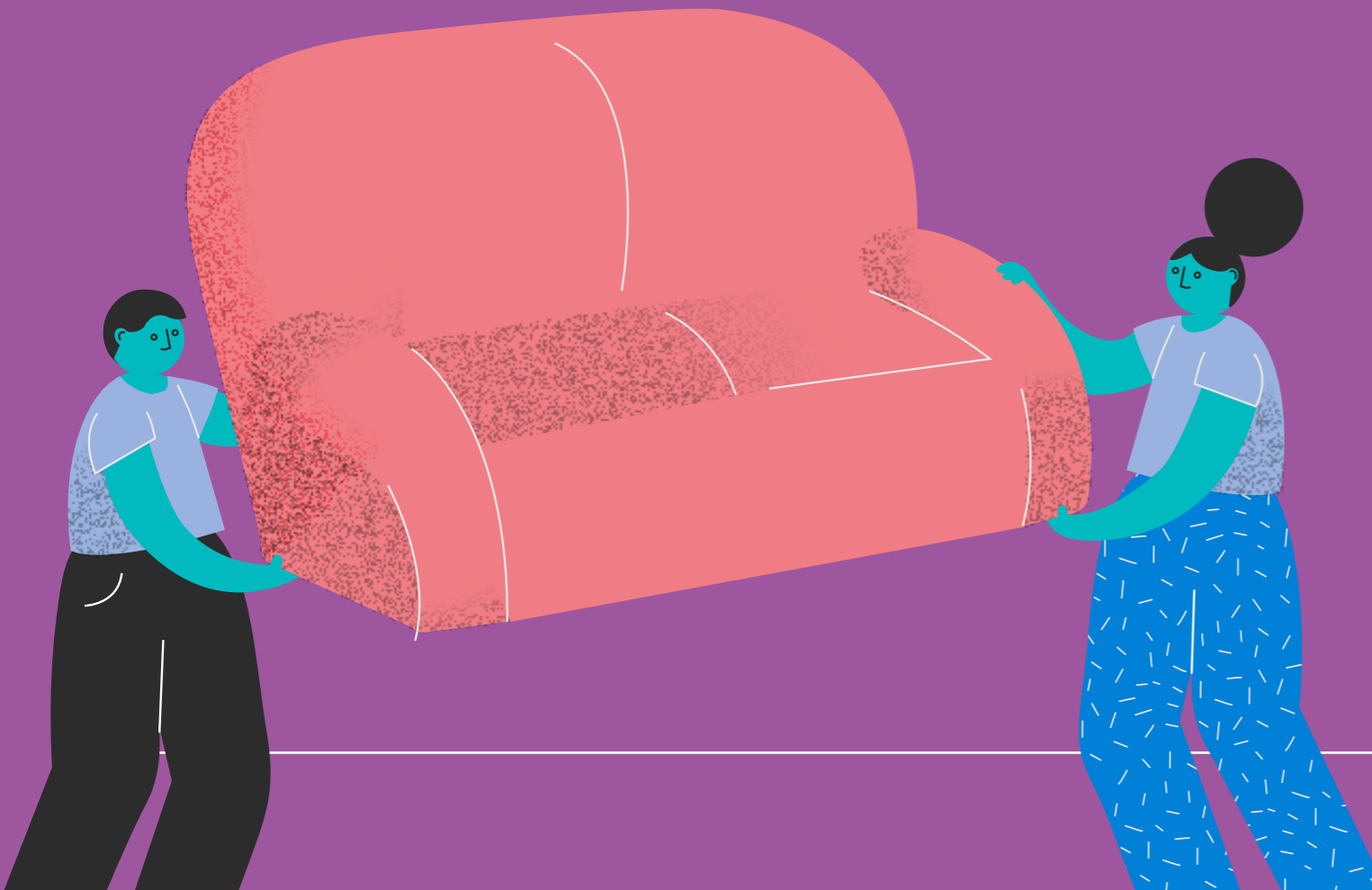


# Who our members are



**Our members are located throughout Scotland, Wales, and England. They support people in their local communities through a whole host of activities.**

In addition to reusing household furniture and electrical items, many of our members run food banks, community cafés, and other complementary activities, as well as providing volunteering and employment opportunities.

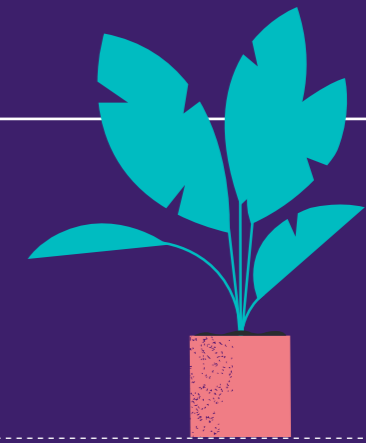


## The people our members support:

The long-term unemployed	67%
The homeless	65%
People facing mental health problems	59%
People with learning disabilities	59%
Disabled people	55%
Offenders and ex-offenders	51%
People struggling with substance misuse	44%
Veterans	42%
Young people	36%
NEET*	35%

\*Young people not in education, employment or training (NEET)

# Our members' reuse activities



**21%**  
IT donation/reuse

**69%**  
electrical items  
reuse/donations

**43%**  
office furniture  
reuse/donations

**29%**  
clothing/textiles

**12%**  
food provision/  
food bank



**38%**  
free furniture  
/electrical items

**85%**  
domestic furniture  
reuse/donations

**18%**  
paint reuse

**24%**  
starter packs  
(not furniture)

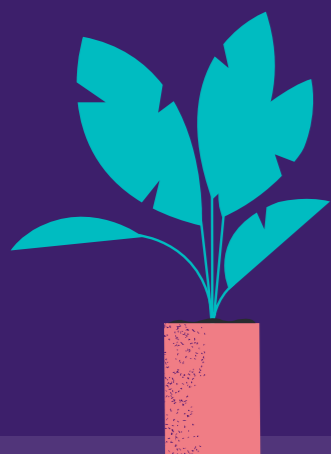
**18%**  
carpets/flooring

# Our members' reuse activities



**Reuse charities are pillars in their community and offer a safe space for people to turn to when they are facing hardship.**

The social impact created by our members is broad, and they continue to diversify to meet the needs of the local community. Our members provide advice, support, and opportunities in a variety of ways, helping local people tackle issues ranging from debt to unemployment.



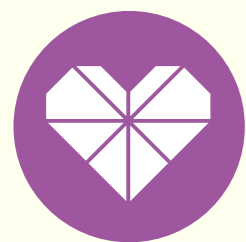
## Additional services provided:

Work/volunteering placements & education support	44%
Homelessness support	22%
Emergency support	15%
Mental health & wellbeing assistance	14%
Training & qualifications	14%
Housing support	13%
Community groups	11%
Upskilling workshops	11%
Probation service support	8%
Repair cafés	7%
Additional needs assistance	5%
Debt advice	5%
Digital inclusion	5%
Uniform libraries	5%
Addiction & rehabilitation	4%
Welfare assistance scheme	4%
Multibanks	3%
Community transport	2%
Baby bank	1%
Nappy libraries	1%

# Our commercial partners' impact

Since we started in 1989, we have built strong partnerships with some of the UK's most prominent retailers, including major department stores, TV and film storage companies, and interior designers. These collaborations have allowed us to broaden the reach and impact of our services.

In 2025, through major commercial retail partnerships managed by Reuse Network, we supplied our members across the UK with 48,000 furniture and electrical items.



**28,271**

UK households helped



**£5.9m**

saved for low-income households



**1,971**

tonnes of CO<sup>2</sup> emissions saved



**2,324**

tonnes of products prevented from being wasted



# The Furniture Revival



**The Furniture Revival is a charity based in Rhymney, South Wales. Run by Groundwork Caerphilly, the charity supports people facing economic hardship by offering low-cost essentials, volunteer opportunities and skills development. By refurbishing and redistributing furniture and electrical goods, The Furniture Revival prevents reusable items from going to landfill, reduces carbon emissions and strengthens community resilience.**

As an Approved Reuse Centre member of Reuse Network, the Furniture Revival supports many of our Commercial Partners by reusing and redistributing unwanted household furniture and electrical appliances. One of the partnerships that The Furniture Revival supports is with Appliance Recycling Group. Throughout 2025, Appliance Recycling Group has donated refurbished electrical appliances to The Furniture Revival, which in turn has provided much-needed white goods to households and organisations across Rhymney and the surrounding areas. These donations have offered practical support to those who might otherwise struggle



to replace essential items, helping them meet everyday needs without financial strain.

One particular organisation supported by The Furniture Revival with white goods from Appliance Recycling Group is a local community centre that delivers a wide range of youth programmes in the area. The centre had been operating without a suitable under-counter fridge, an essential item needed to safely store food and drinks for the young people attending their activities. A member of the local community, aware of this need, visited The Furniture Revival shop and was able to purchase a refurbished fridge at a fraction of the cost of buying new.

Having access to this essential item has enabled the centre to continue to offer refreshments during their sessions, ensuring the young people who attend are well nourished and supported while they take part in constructive, positive activities. For many participants, these programmes provide a crucial outlet, especially in an area where opportunities for young people can be limited.

The impact of such donations extends far beyond practical convenience. They enable charities and community organisations to deliver services more effectively, helping them

to stretch scarce funding further while continuing to meet the needs of local residents. Affordable access to white goods also reduces waste, keeps usable items in circulation, and supports a more sustainable, community-focused model of consumption.

Through partnerships like this, the reuse sector continues to strengthen local resilience, protect the environment, and create meaningful social impact where it is needed most.

“As a small charity being an Approved Reuse Centre member of Reuse Network has given us access to a higher quality of goods that we wouldn’t have otherwise been able to obtain. This in turn has supported us in upholding our social and environmental values, which are the foundations of our organisation.

We take pride in our Business Excellence Approved Reuse Centre status. The audit process helps to give us peace of mind that we meet the industry standards required in our sector. We are grateful to Reuse Network for the ongoing support and opportunities afforded to us by being Approved Reuse Centre members.”

**Manager, The Furniture Revival**

